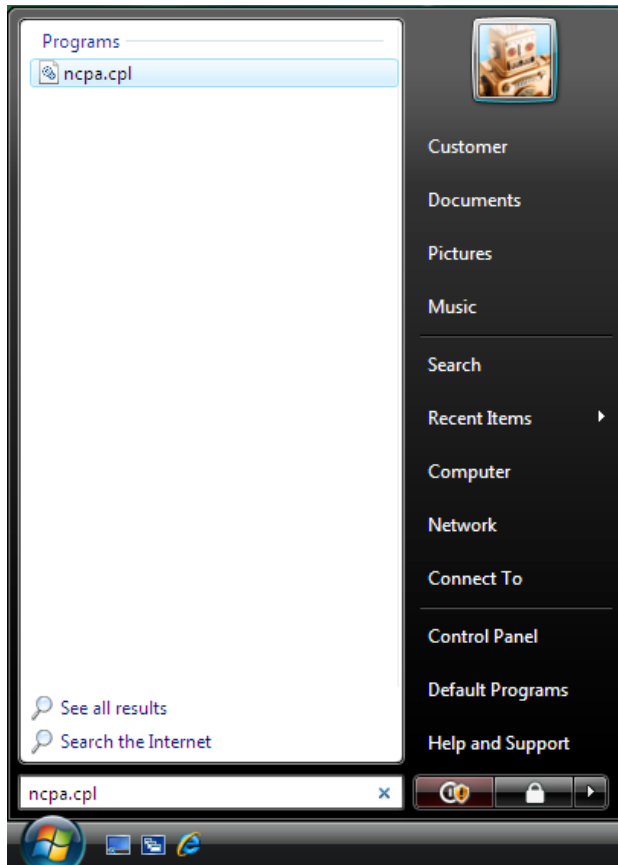
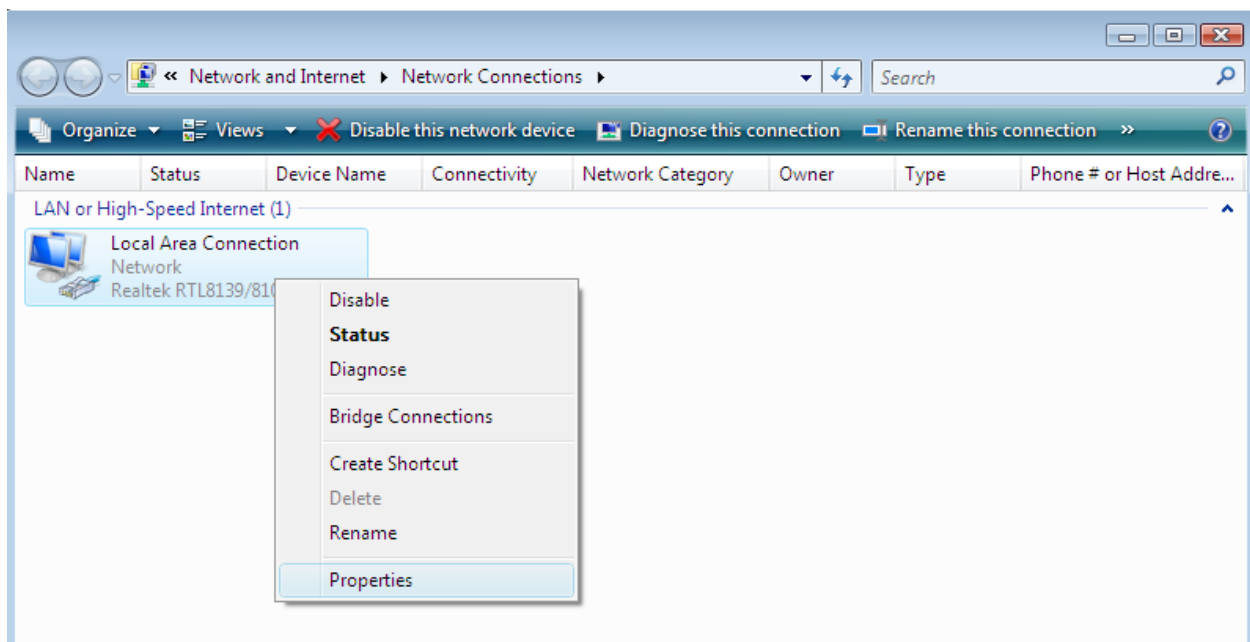


1. Click on the start icon and type in ncpa.cpl in the search box. Hit Enter on keyboard.

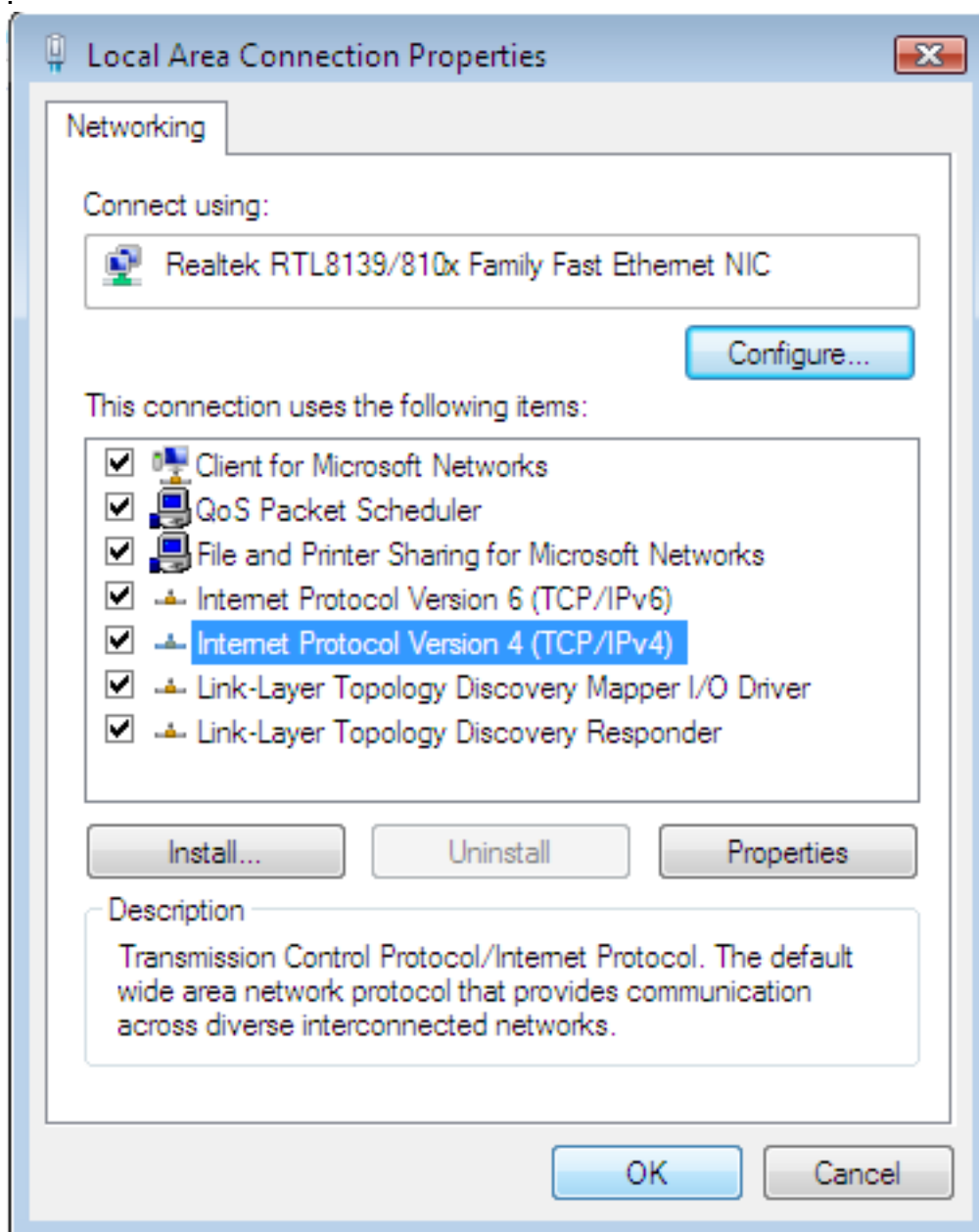


2. Right click on Local Area Connection and select Properties.

Select continue if prompted.

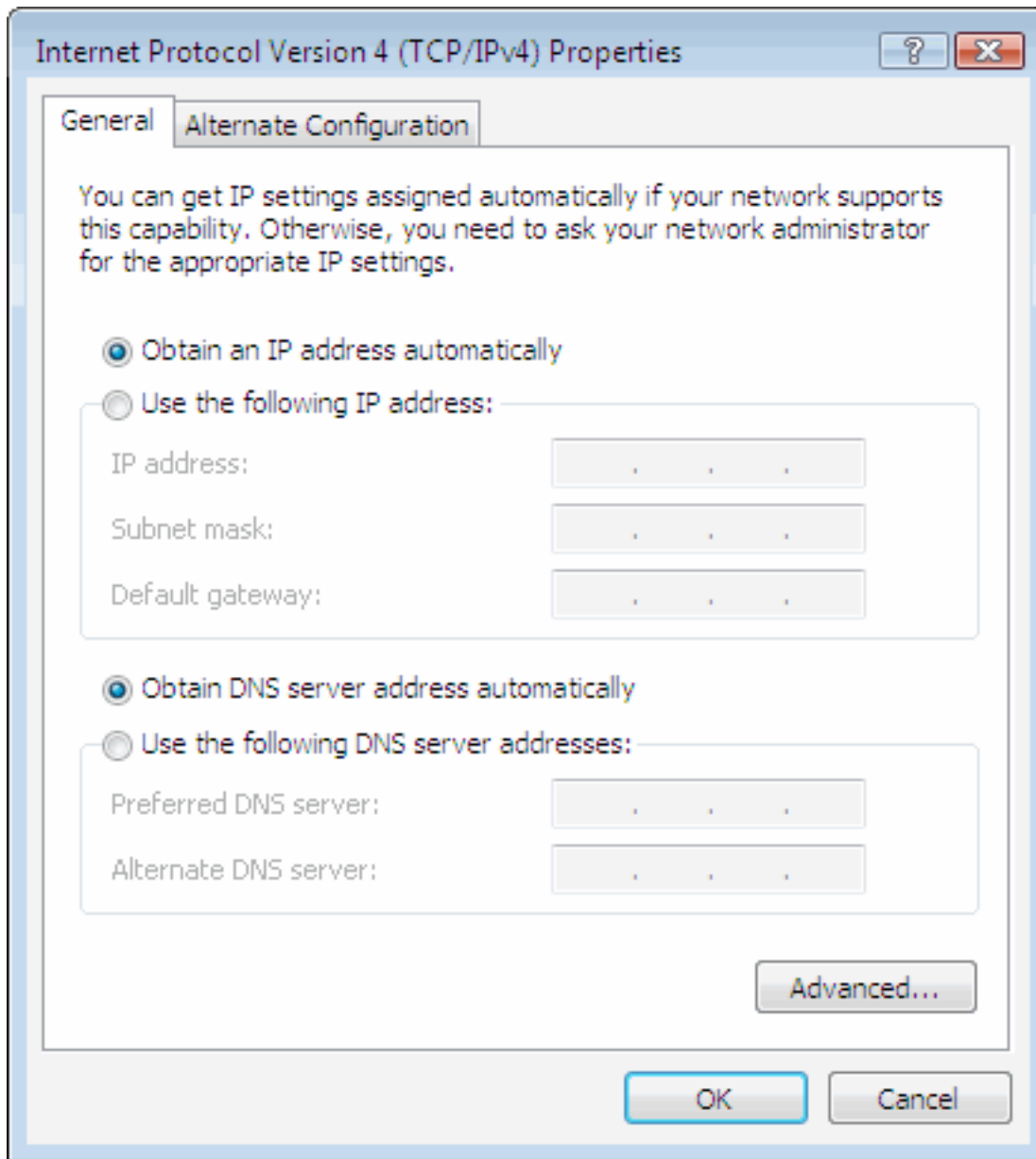


3. Click on Internet Protocol Version 4 (TCP/IPv4) and select Properties



4. Click on Use the following IP address and fill in your information

IP settings can be obtained from <http://usage.shockware.com>



5. Click OK and OK again on the previous window